



PRODUCT CATALOGUE

p e r s o n a l c a r e

Content

3	Whyte Magic Bio Skin Clear
4	Whyte Magic Bio Cleansing Milk
5	Whyte Magic Bioactive Cleanser
6	Whyte Magic Bio Lightening Repair
7	Whyte Magic Bioactive C20
8	Whyte Magic Bio Concentrated Serum
9	Whyte Magic Bio White Essence
10	Whyte Magic Bio Purifying Essence
11	Whyte Magic Bio E
12	Whyte Magic Bio Nourisher Plus
13	Whyte Magic Bioactive Moisturiser
14	Whyte Magic Bio Repair Mask
15	Whyte Magic Bio SPF30 PA+++
16	Ocean Phyto Hair Shampoo (Normal to dry)
17	Ocean Phyto Hair Shampoo (Normal to oily)
18	Ocean Phyto Anti-Dandruff Shampoo
19	Ocean Phyto Hair Conditioner
20	Ocean Phyto Hair Gel
21	Ocean Phyto Conditioning Hair Spray
22	Ocean Phyto Shower Cream
23	Ocean Phyto Body Scrub
24	Ocean Phyto Hand & Body Lotion
25	Ocean Phyto Body Talcum Powder
26	Ocean Phyto Facial Cleanser
27	Ocean Phyto Creme Moisturiser SPF25
28	Ocean Phyto Creme Gel Moisturiser
29	Winz Fresh Toothpaste
30	Winz Mouthwash
31	RJ Roll-On Anti Perspirant Deodorant
32	RJ Total Clean
33	RJ Intimate Wash
34	Joshi Sanitary Napkin (Day use)
35	Joshi Sanitary Napkin (Night use)
36	Joshi Panty Liner
37	Firesens Mentholated Rub
38	Nutrimoist
39	Sandfi Body Shaping Lotion



Whyte Magic Bio Skin Clear (1A)

Gently clears off blackhead, exfoliates dead skin cell

This superb gel helps to disintegrate dead skin cells, black heads and oil seeds into small particles, hence preventing blocked pores and give your skin a more radiant look with a smoother feel.

SPECIAL FEATURES

Contains natural plant extract

- *Formulated with Ginseng Extract, Chamomile Extract, Aloe Barbadensis Extract, Witch Hazel Extract, and Cucumber Extract.*

Contains Sodium Hyaluronate

- *Excellent moisturizing agent.*

Contains no abrasive fruit exfoliating beads

- *Gently clears off blackhead, exfoliates dead skin cells, effectively brightens skin, pores purifying.*

AVAILABLE PACK SIZE

30g

STORAGE CONDITION

Keep in cool and dry place, avoid direct sunlight and heat.

DIRECTIONS OF USE

Apply a sufficient amount on the face before cleansing. Massage gently over the face for 3-4 minutes until residue appears. Wash thoroughly with lukewarm water, and then follow with cleansing steps.





Whyte Magic Bio Cleansing Milk ^(1B)

Moisturize your skin while cleansing away make-up

Now you can soothe and moisturize your skin while cleansing away your make-up. Enriched with botanical extract, Allantoin and moisturizing emollients, this gentle yet efficient formula lifts away all impurities including eyes and lips make-up.

SPECIAL FEATURES

Contains Allantoin

- *Soothing effect.*

Moisturizes the skin during make-up removal.

- *Lifts away oil impurities while retaining skin moisture level.*

AVAILABLE PACK SIZE

120g

STORAGE CONDITION

Keep in cool and dry place, avoid direct sunlight and heat.

DIRECTIONS OF USE

Apply with fingertips onto the whole face. Gently work on with a circular massage motion. Tissue off or rinse off. Follow with regular cleanser.





Whyte Magic Bioactive Cleanser (1C)

Bioactive enzyme powder extracted from grains and fruits

This powder formula activates upon contact with water, releasing bioactive enzyme powder extracted from grains and fruits function to digest the dulling debris and remove the dirt, sebum and old excess cells, which smooth the skin and accelerate cell renewal. The high bioactivity and the cleansing effect of enzymes is maintained and performed efficiently with the powder preparation by state of the art biotechnology.

SPECIAL FEATURES

Contains Papain, Grain Enzyme

- *Sloughs off dead cells and wicks away impurities.*

Contains Silica

- *Coats the surface to develop a film for protection of the fragile skin.*

Contains Arbutin

- *Whitening effect.*

Comfortable feel

- *No dryness and tautness.*

AVAILABLE PACK SIZE

70g

STORAGE CONDITION

Keep in cool and dry place, avoid direct sunlight and heat.

DIRECTIONS OF USE

Dispense about a half-teaspoon of powder into very wet hands to create a creamy paste. Apply to face in circular motions. Massage gently for one minute and then rinse off thoroughly.





Whyte Magic Bio Lightening Repair (2A)

Revitalize and condition the skin

Formulated with Pro-Vitamin B5 that stimulates skin regeneration and helps to revitalize and condition the skin, resulting in younger and healthier looking skin. Enhanced with Arbutin to provide natural lightening effect that fades dark spots caused by aging, UV and other environmental damage.

SPECIAL FEATURES

Contains Arbutin

- *Whitening effect.*

Contains Sodium Hyaluronate

- *Excellent moisturizing agent.*

Contains Vitamin B complex- B1, B3, B5,B6

- *Stimulates skin regeneration and helps to revitalize and condition the skin.*

Contains Plant Extracts

- *Natural extracts with good soothing and moisturizing properties.*

AVAILABLE PACK SIZE

60ml

STORAGE CONDITION

Keep in cool and dry place, avoid direct sunlight and heat.

DIRECTIONS OF USE

With eyes closed, hold spray bottle about 15 – 20cm from face. Spray sparingly over entire face. Gently pat face with fingertips to complete absorption. Use day and night after cleansing.





Whyte Magic Bioactive C20 ^(3A)

Water soluble, small molecule, immediate effect.

A lightweight, oil-free and fast absorbing formulation that effectively reduces fine lines, wrinkles and pigments. Its unique blend of antioxidants and Mulberry Extract brightens dull complexions while protecting the skin from free radicals damage. Moisturizes the skin and stimulates collagen production for skin rejuvenation.

SPECIAL FEATURES

Contains L-Ascorbic Acid

- *Reduces fine lines, wrinkles and pigments.*

Contains Mulberry Extract

- *Whitening effect.*

Contains Sodium Hyaluronate

- *Excellent moisturizing agent.*

AVAILABLE PACK SIZE

15ml

STORAGE CONDITION

Store refrigerated upon opening, avoid direct sunlight.

DIRECTIONS OF USE

After cleansing and toning, apply 2 to 3 drops of serum evenly over the face. Pat lightly to complete absorption. It is essential to follow with skin moisturizer and sun protection product. Flexible to be used on its own or mixed together with moisturizing essence or cream product. Excellent for both face and neck.





Whyte Magic Bio Concentrated Serum (3B)

Lipid soluble, large molecule, long lasting effect.

A super concentrated fluid to continuously deliver the L-Ascorbic acid into dermis layer by the liposome technology. The sustained release prolongs the lightening effect with additional rejuvenation from Green Tea extract and Hexyldecanoic acid.

SPECIAL FEATURES

Contains L-Ascorbic Acid

- *Reduces fine lines, wrinkles and pigments.*

Contains Camellia Oleifera Seed extract

- *Protecting the skin from free radicals damage.*

Lipid soluble, large molecule

- *Prolong release of anti-wrinkle and whitening active ingredients.*

AVAILABLE PACK SIZE

15ml

STORAGE CONDITION

Store refrigerated upon opening, avoid direct sunlight.

DIRECTIONS OF USE

Use day and night after cleansing and toning, apply 2 to 3 drops of serum evenly over the face. Pat lightly to complete absorption. It is essential to follow with skin moisturizer and sun protection product. Use on its own or mixed together with moisturizing essence or cream product.

Excellent for both face and neck.





Whyte Magic Bio White Essence ^(3C)

An advanced lightening essence

An advanced lightening essence formulated with Arbutin and B3 Niacinamide that work synergistically to fades dark spots, improving the tone and balance of the skin, leaves skin a radiant complexion.

SPECIAL FEATURES

Contains Arbutin

- *Helps to hasten the dispersion and discharge of dark spots.*

Contains Vitamin B3

- *Contribute to lightening effect and repairs skin condition.*

Contains Sodium Hyaluronate

- *Excellent moisturizing agent.*

AVAILABLE PACK SIZE

30ml

STORAGE CONDITION

Keep in cool and dry place, avoid direct sunlight and heat.

DIRECTIONS OF USE

After cleansing and toning, apply an appropriate amount to whole face and neck. Slightly pat to complete absorption.





Whyte Magic Bio Purifying Essence ^(3D)

Normalizes sebum secretion, refines pores and relief for acne

Restore your skin's healthy glow while it removes impurities and hydrates blemishes skin. Uniquely blend with Calendula, Aloe, Horse Chestnut and Licorice Extracts especially for pimple prone skin. It is ideal for oily skin to rebalance the sebum control.

SPECIAL FEATURES

Contains calming extracts of Chamomile, Peppermint, Cucumber and Witch Hazel

- *Removes impurities, control excess oil and refine pores.*

Contains natural plant extracts

- *Formulated with Calendula Extract, Aloe Vera Extract and Licorice Extract, provide soothing, moisturizing and whitening properties.*

AVAILABLE PACK SIZE

30ml

STORAGE CONDITION

Keep in cool and dry place, avoid direct sunlight and heat.

DIRECTIONS OF USE

After cleansing, gently dab a suitable amount over the face.





Whyte Magic Bio E ^(3E)

Essence for skin moisturization and free radicals protection

A fast absorbing and deep penetration moisture essence formulated with blends of Jojoba Oil, Vitamin E and Lavender Essential Oil that work synergistically for skin moisturization and free radicals protection. Ideal for all skin types especially dry, dehydrated and mature skin.

SPECIAL FEATURES

Contains Jojoba Oil

- *High nourishing properties.*
- *Enhance moisture retention.*
- *Controls flaking and dryness of the skin.*

Contains Vitamin E Acetate

- *A powerful anti-oxidizing agent with free radicals scavenging properties.*

Contains Lavender essential oil

- *Soothing sensation.*

AVAILABLE PACK SIZE

10ml

STORAGE CONDITION

Keep in cool and dry place, avoid direct sunlight and heat.

DIRECTIONS OF USE

Use day and night after cleansing and toning. Spread 2 to 3 drops of Bio E onto your palm and pat lightly over the face to complete absorption. Flexible to be used on its own or mixed together with moisturizing cream product. Excellent for both face and neck.





Whyte Magic Bio Nourisher Plus ^(4A)

Fortified with a potent blend of Vitamin A, B, C and E plus phytonutrient from tea

An ultra-rich long-lasting moisture booster, fortified with a potent blend of Vitamin A, B, C and E plus phytonutrient from tea to combat the effects of premature aging. Regular use of this daily dose of pure vitamins helps your skin to recover from previous free radical damage.

SPECIAL FEATURES

Vitamin A, B, C, E

- *To combat the effects of premature aging.*

Refreshing

- *Leaves no oily residue.*

AVAILABLE PACK SIZE

30g

STORAGE CONDITION

Keep in cool and dry place, avoid direct sunlight and heat.

DIRECTIONS OF USE

Use after toning or after applying any essence or serum.
Apply a sufficient amount evenly over the face and neck.
Gently massage to complete absorption.





Whyte Magic Bioactive Moisturizer ^(4B)

Hydrates and nourishes the skin all day long

This exceptionally hydrating formula is enriched with Omega 3, 6 and 9 from plant oil help to lock in essential moisture. By restoring the skin's natural moisture level, it provides optimum protection in dry weather, leaving your skin remarkably soft and smooth for a radiant complexion.

SPECIAL FEATURES

Contains Omega 3, 6, 9

- *Nourishes the skin.*

Hydrates the skin all day long.

- *Provides optimum protection in dry weather.*

Contains Ellagic Acid

- *Skin lightening effect.*

AVAILABLE PACK SIZE

30g

STORAGE CONDITION

Keep in cool and dry place, avoid direct sunlight and heat.

DIRECTIONS OF USE

Use after toning or after applying any essence or serum.
Apply a sufficient amount evenly over the face and neck.
Gently massage to complete absorption.





Whyte Magic Bio Repair Mask (5A)

Unique vacuum like bamboo charcoal ingredient

A purifying mask with Bamboo Charcoal, B3 Niacinamide, Aloe, Urea, Jojoba and Sun Flower Extract, to deep-cleanse the skin, brighten and refine its texture. Refreshes skin as it cleans deeply and frees clogged pores, leave the skin supple and alive. Gently stimulates your skin and sloughs off dead cells, allowing fresh, new cells to surface.

SPECIAL FEATURES

Unique vacuum like Bamboo Charcoal

- *Wicks away excess oil, draws out deep dwelling pores cloggers, absorbs impurities out of your skin.*

Contains Niacinamide

- *Removes melanin loaded cells and contributes to the lightening effect.*

Contains Aloe Barbadensis Gel

- *Provided soothing, moisturizing effect.*

Contains Jojoba Oil, Sunflower Seed Oil

- *Nourishes the skin.*

Contains Dipotassium Glycyrrhizate

- *Good soothing agent.*

Contains Vitamin E

- *Free radicals scavenging properties.*

AVAILABLE PACK SIZE

75g

STORAGE CONDITION

Keep in cool and dry place, avoid direct sunlight and heat.

DIRECTIONS OF USE

Use once a week or as often as needed. After cleansing and toning, apply a layer over the face and neck. Allow mask to work for 7-10 minutes and then rinse off with lukewarm water. It is essential to follow with further skin care products. Excellent for both face and body. Suitable for all skin types especially oily skin.





Whyte Magic

Bio SPF 30 PA+++ (6A)

Broad UV spectrum protection

Ultra sun protection and great skin tone unite in this moisture-rich sun block. Our renowned sunscreen technology provides physical and chemical sun blocking system to protect the skin completely from sun damage while serving as make-up base to even up your complexion.

SPECIAL FEATURES

Broad spectrum UV filter

- *To guard against the harmful UVA and UVB rays for your indoor and outdoor activities.*

Ultra-fine particle technology

- *Provides multi-blocking layer to increase sun blocking performance.*

AVAILABLE PACK SIZE

30g

STORAGE CONDITION

Keep in cool and dry place, avoid direct sunlight and heat.

DIRECTIONS OF USE

Apply appropriate amount and gently pat to even.
Reapply after swimming, or every two hours during outdoor activities.
Use as part of your daily skin care regime.



RJ Ocean Phyto Hair Shampoo (Normal/Dry)

Optimum cleansing, conditioning and moisture balance to hair

It is uniquely blended to provide optimum cleansing, conditioning and moisture balance to hair. Pleasant fragrance and essential oil distillates bring you sensations of relaxation & well being.

SPECIAL FEATURES

Contains Sea Minerals

- *Rich in macro elements such as Calcium and Magnesium and in trace elements such as Iron and Zinc.*

Contains Soy Protein

- *To nourish and strengthen hair.*

Consists of aromatic plant compounds (Lavandula Stoechas Extract, Crithmum Maritimum, Cistus Monspeliensis)

- *Encourage relaxation and well being of the body.*

AVAILABLE PACK SIZE

250ml

STORAGE CONDITION

Keep in cool place.

DIRECTIONS OF USE

Apply on damp hair, massage and rinse well.
Suitable for daily use.



RJ Ocean Phyto Hair Shampoo (Normal/Oily)

Effectively removes excess sebum and residue without over-drying

It is uniquely blended to provide optimum cleansing, and conditioning to hair. It effectively removes excess sebum and residue without over-drying, leaving hair shiny clean and full of bounce. Pleasant fragrance and essential oil distillates bring you sensations of relaxation and well being.

SPECIAL FEATURES

Contains Sea Minerals

- Rich in macro elements such as Calcium and Magnesium and in trace elements such as Iron and Zinc.

Contains Soy Protein

- To nourish and strengthen hair.

Consists of aromatic plant compounds (Lavandula Stoechas Extract, Crithmum Maritimum, Cistus Monspeliensis)

- Encourage relaxation and well being of the body.

AVAILABLE PACK SIZE

250ml

STORAGE CONDITION

Keep in cool place.

DIRECTIONS OF USE

Apply on damp hair, massage and rinse well.
Suitable for daily use.



RJ Ocean Phyto Anti-dandruff Shampoo

Effectively remove dandruff

It is uniquely blended to provide optimum cleansing, conditioning and care to your hair and scalp. Contains Climbazole to effectively remove dandruff, and Soy Protein to strengthen hair. Pleasant fragrance and essential oil distillates brings you sensations of relaxation and well being.

SPECIAL FEATURES

Contains Sea Minerals

- *Rich in macro elements such as Calcium and Magnesium and in trace elements such as iron and zinc.*

Contains Soy Protein

- *To nourish and strengthen hair.*

Formulated with Climbazole

- *An anti-dandruff active ingredient.*

Consists of aromatic plant compounds (Lavandula Stoechas Extract, Crithmum Maritimum, Cistus Monspeliensis)

- *Encourage relaxation and well being of the body.*

AVAILABLE PACK SIZE

250ml

STORAGE CONDITION

Keep in cool place.

DIRECTIONS OF USE

Apply on damp hair, massage and rinse well.
Suitable for daily use.



RJ Ocean Phyto Hair Conditioner

Moisturize, smooth and revitalize hair

It is uniquely blended with rich emollient, Jojoba Oil, to moisturize, smooth and revitalize hair. With colour lock system to protect against fading for color-treated hair. Pleasant fragrance and essential oil distillates bring you sensations of relaxation and well being.

SPECIAL FEATURES

Contains Sea Minerals

- *Rich in macro elements such as Calcium and Magnesium and in trace elements such as iron and zinc.*

Contains Soy Protein

- *To nourish and strengthen hair.*

Formulated with natural emollient, Jojoba Oil

- *Moisturizing and conditioning.*

Consists of aromatic plant compounds (Lavandula Stoechas Extract, Crithmum Maritimum, Cistus Monspeliensis)

- *Encourage relaxation and well being of the body.*

AVAILABLE PACK SIZE

200ml

STORAGE CONDITION

Keep in cool place.

DIRECTIONS OF USE

After shampooing, apply evenly to damp hair. Leave on for a few minutes. Rinse thoroughly.



RJ Ocean Phyto Hair Gel

Superior and long lasting hold

It is a medium to hard hair styling gel that provides superior and long lasting hold. Pleasant fragrance and essential oil distillates bring you sensations of relaxation and well being.

SPECIAL FEATURES

Contains Sea Minerals

- *Rich in macro elements such as Calcium and Magnesium and in trace elements such as Iron and Zinc.*

Contains Soy Protein

- *To nourish and strengthen hair.*

Consists of aromatic plant compounds (Lavandula Stoechas Extract, Crithmum Maritimum, Cistus Monspeliensis)

- *Encourage relaxation and well being of the body.*

AVAILABLE PACK SIZE

200ml

STORAGE CONDITION

Keep in cool place.

DIRECTIONS OF USE

Apply on wet or dry hair. Work through hair, comb and style as usual.



RJ Ocean Phyto Hair Spray

Detangles and control frizz

It is a convenient leave-on conditioner spray to restore lost moisture. Effectively detangles and control frizz, leaving hair shinier, smoother and extra manageable. Pleasant fragrance and essential oil distillates bring you sensations of relaxation and well being.

SPECIAL FEATURES

Contains Sea Minerals

- *Rich in macro elements such as Calcium and Magnesium and in trace elements such as Iron and Zinc.*

Contains Soy Protein

- *To nourish and strengthen hair.*

Contains Phytantriol

- *Protects the hair shaft during hot blow-drying.*

Consists of aromatic plant compounds (Lavandula Stoechas Extract, Crithmum Maritimum, Cistus Monspeliensis)

- *Encourage relaxation and well being of the body.*

Enriched with 8 Amino Acids and Sodium PCA

- *To moisturize and strengthen hair.*

AVAILABLE PACK SIZE

190ml

STORAGE CONDITION

Keep in cool place.

DIRECTIONS OF USE

Shake until well mixed. Spray on wet or dry hair, especially on split ends or damage portion, then massage and spread evenly.



RJ Ocean Phyto Shower Cream

Cleanse while maintaining the skin's natural moisture balance

It is uniquely formulated to promote healthy and beautiful skin while maintaining the skin's natural moisture balance. Contains whitening agent to give you fairer and brighter skin. Pleasant fragrance and essential oil distillates bring you sensations of relaxation and well being.

SPECIAL FEATURES

Contains Sea Minerals

- *Rich in macro elements such as Calcium and Magnesium and in trace elements such as Iron and Zinc.*

Consists of four whitening plant extracts-Saxifraga Sarmentosa Extract, Morus Bombycis Root Extract, Vitis Vinifera Fruit Extract, Scutellaria Baicalensis Root Extract.

- *Synergistic action in whitening activity.*

Consists of aromatic plant compounds (Lavandula Stoechas Extract, Crithmum Maritimum, Cistus Monspeliensis)

- *Encourage relaxation and well being of the body.*

AVAILABLE PACK SIZE

250ml

STORAGE CONDITION

Keep in cool place.

DIRECTIONS OF USE

Lather well over your body. Rinse thoroughly with water.



RJ Ocean Phyto Body Scrub

Cleanse, exfoliate and moisturize your skin

A triple action body scrub which cleanse, exfoliate and moisturize your skin at the same time. Formulated with dermo-compatible beads to smoothen the dull appearance of your skin. Contains whitening agent to give you fairer and brighter skin. Pleasant fragrance and essential oil distillates bring you sensations of relaxation and well being.

SPECIAL FEATURES

Contains Sea Minerals

- *Rich in macro elements such as Calcium and Magnesium and in trace elements such as Iron and Zinc.*

Consists of four whitening plant extracts-Saxifraga Sarmentosa Extract, Morus Bombycis Root Extract, Vitis Vinifera Fruit Extract, Scutellaria Baicalensis Extract.

- *Synergistic action in whitening activity.*

Formulated with Olive Husk Powder

- *A natural scrubbing agent to gently remove dead skin cells, leaving skin renew and radiant.*

Consists of aromatic plant compounds (Lavandula Stoechas Extract, Crithmum Maritimum, Cistus Monspeliensis)

- *Encourage relaxation and well being of the body.*

AVAILABLE PACK SIZE

250ml

STORAGE CONDITION

Keep in cool place.

DIRECTIONS OF USE

Lather well over the body. Massage and rinse thoroughly with water.



RJ Ocean Phyto Hand & Body Lotion

Moisture rich lotion

A moisture rich lotion that is easily absorbed into your skin, leaving your skin soft and supple with daily use. Blended with moisturizing emollient, Jojoba Oil to increase skin moisture. Contains whitening agent to lighten your skin tone for fairer and brighter skin. Pleasant fragrance and essential oil distillates bring you sensations of relaxation and well being.

SPECIAL FEATURES

Contains Sea Minerals

- *Rich in macro elements such as Calcium and Magnesium and in trace elements such as Iron and Zinc.*

Contains Jojoba Oil

- *Increase skin moisture.*

Consists of four whitening plant extracts-Saxifraga Sarmentosa, Morus Bombycis Root, Vitis Vinifera Fruit, Scutellaria Baicalensis

- *Synergistic action in whitening activity*

Consists of aromatic plant compounds (Lavandula Stoechas Extract, Crithmum Maritimum, Cistus Monspeliensis)

- *Encourage relaxation and well being of the body.*

AVAILABLE PACK SIZE

200ml

STORAGE CONDITION

Keep in cool place.

DIRECTIONS OF USE

Gently massage to all areas of the body. For best results, use immediately after shower or bath.



RJ Ocean Phyto Body Talcum Powder

A light, soft powder

A light, soft powder that gives your skin a velvety softness and freshness after bath or shower. Pleasant fragrance and essential oil distillates bring you sensations of relaxation and well being.

SPECIAL FEATURES

Consists of aromatic plant compounds (Lavandula Stoechas Extract, Crithmum Maritimum, Cistus Monspeliensis)

- *Encourage relaxation and well being of the body.*

Consists of four whitening plant extracts-Saxifraga Sarmentosa Extract, Morus Bombycis Root Extract, Vitis Vinifera Fruit Extract, Scutellaria Baicalensis Extract.

- *Synergistic action in whitening activity.*

AVAILABLE PACK SIZE

100g

STORAGE CONDITION

Keep in cool place.

DIRECTIONS OF USE

Sprinkle powder onto body after bath or shower.



RJ Ocean Phyto Facial Cleanser

Gently yet thoroughly cleanse your skin

A mild foaming gel cleanser that gently yet thoroughly cleanse your skin leaving it clean, moist and refreshed. Contains whitening agent to lighten your skin tone for fairer and brighter complexion. Pleasant fragrance and essential oil distillates bring you sensations of relaxation and well being.

SPECIAL FEATURES

Contains Sea Minerals

- *Rich in macro elements such as Calcium and Magnesium and in trace elements such as Iron and Zinc.*

Consists of four whitening plant extracts-Saxifraga Sarmentosa Extract, Morus Bombycis Root Extract, Vitis Vinifera Fruit Extract, Scutellaria Baicalensis Extract.

- *Synergistic action in whitening activity.*

Consists of aromatic plant compounds (Lavandula Stoechas Extract, Crithmum Maritimum, Cistus Monspeliensis)

- *Encourage relaxation and well being of the body.*

Formulated with mild surfactant agent

- *With good dermatological compatibility.*

AVAILABLE PACK SIZE

200ml

STORAGE CONDITION

Keep in cool place.

DIRECTIONS OF USE

Wet the face. Squeeze an adequate amount on palm and apply on face. Rinse off.



RJ Ocean Phyto Cream Moisturizer SPF25

Protect your skin against harmful UV rays

It is specially formulated to moisturize and protect your skin against harmful UV rays, leaving it soft, smooth and supple. Pleasant fragrance and essential oil distillates bring you sensations of relaxation and well being.

SPECIAL FEATURES

Contains Sea Minerals

- *Rich in macro elements such as Calcium and Magnesium and in trace elements such as Iron and Zinc.*

Consists of four whitening plant extracts-Saxifraga Sarmentosa Extract, Morus Bombycis Root Extract, Vitis Vinifera Fruit Extract, Scutellaria Baicalensis Extract.

- *Synergistic action in whitening activity to lighter skin tone for fairer and brighter complexion.*

Contains Titanium Dioxide sunscreen agent

- *To protect your skin against harmful UV rays*

Consists of aromatic plant compounds (Lavandula Stoechas Extract, Crithmum Maritimum, Cistus Monspeliensis)

- *Encourage relaxation and well being of the body.*

AVAILABLE PACK SIZE

100ml

STORAGE CONDITION

Keep in cool place.

DIRECTIONS OF USE

Smooth evenly over face and neck every morning after cleansing and toning. then massage and spread evenly.



RJ Ocean Phyto Cream Gel Moisturizer

Moisturize skin

It is a non greasy hydrating cream-gel that moisturize skin leaving it soft, smooth and supple. Pleasant fragrance and essential oil distillates bring you sensations of relaxation and well being.

SPECIAL FEATURES

Contains Sea Minerals

- *Rich in macro elements such as Calcium and Magnesium and in trace elements such as Iron and Zinc.*

Enriched with Vitamin E

- *Powerful antioxidant and skin moisturizing agent.*

Consists of Seaweed Extract

- *To regulate excess sebum secretion.*

Consists of aromatic plant compounds (Lavandula Stoechas Extract, Crithmum Maritimum, Cistus Monspeliensis)

- *Encourage relaxation and well being of the body.*

AVAILABLE PACK SIZE

100ml

STORAGE CONDITION

Keep in cool place.

DIRECTIONS OF USE

Smooth evenly over face and neck every morning after cleansing and toning. Use twice a day, morning and night.



Winz Fresh Toothpaste

Toothpaste with Kayu Sugi

Winz Fresh toothpaste is specially formulated with Kayu Sugi that clean teeth effectively and provide a cooling and refreshing sensation after brushing.

SPECIAL FEATURES

Contains Kayu Sugi

- *An effective oral hygiene tool that gives excellent oral cleanliness and promote dental care.*

Contains Silica

- *An effective polishing system that cleans teeth effectively.*

Contains double Calcium

- *Remineralizes enamel, which contributes to the function of teeth and gum strengthening.*

Contains Xylitol

- *A non carcinogenic sweetener which is not fermented by oral bacteria.*

Contains Whitening Polymer

- *Remove yellow stains and enhance the whiteness of your teeth.*

Contains Mint flavor

- *Provides a refreshing and cooling sensation after brushing.*

AVAILABLE PACK SIZE

150g

STORAGE CONDITION

Store in a cool and dry place.



Winz Mouthwash

Mouthwash for everyone

Winz Mouthwash is formulated with Neem Extract cleans even in the hard to reach places. Everyday usage can reduce plaque problems.

SPECIAL FEATURES

Contains a unique ingredient Neem

- *It has an active content with anti-bacteria and natural antiseptic properties.*

Minty flavour

- *Has a great refreshing taste and gives long lasting fresh breath.*

AVAILABLE PACK SIZE

310ml

STORAGE CONDITION

Store in a cool and dry place.

DIRECTIONS OF USE

Use twice a day, before or after brushing. Use half capful (20ml) to thoroughly rinse your mouth. Do not swallow.



RJ Roll-On Anti Perspirant Deodorant

Mild, Safe and Effective

RJ Roll On Anti-Perspirant Deodorant is free of alcohol and is formulated with Tea Tree Oil which is a natural antiseptic. Apply 4-6 wipes per underarm for anytime for a comfortable and refreshing day!

SPECIAL FEATURES

2-in-1 functions

- *As deodorant and anti-perspirant.*

Contains Tea Tree Oil

- *Natural antiseptic and fragrance.*

AVAILABLE PACK SIZE

75ml

STORAGE CONDITION

Store in a cool and dry place.

DIRECTIONS OF USE

Tip bottle once, hold upright and roll on underarm.
Close cap tightly after use. Do not apply on broken skin.

*To be upgraded soon



RJ Total Clean

Hand Sanitizer

CNI RJ Total clean is specially formulated as a hand sanitizer without the need to rinse. Effectively cleanses hands of dirt and grime while moisturizing them. Best used while traveling, during picnics or outdoor activities. Suitable for frequent use and comes with a fresh, clean scent for a refreshing feeling all day!

SPECIAL FEATURES

Convenient

- *Very compact size, easily to bring anywhere.*
- *Do not need to be rinse, can be used anywhere and anytime.*

Contains Olive Oil and Ethanol

- *Effectively cleanses and moisturizes hands.*

Contains Allantoin

- *Protects and softens skin.*

AVAILABLE PACK SIZE

90ml

STORAGE CONDITION

Store in a cool and dry place.

DIRECTIONS OF USE

Pour 2-3 drops of RJ Total Clean on palm and rub both palms. Do not need to rinse.

*To be upgraded soon



RJ Intimate Wash

Cleanse, Protect and Refresh

CNI RJ Intimate Wash is used daily for total cleansing and all-day freshness. Its soap-free formula and pH which is similar to the skin to ensure total natural protection for women. It is simple to use and easy to carry anywhere.

SPECIAL FEATURES

Special pump

- *That changes liquid to foam when the bottle's head is pressed. This is to ensure accurate mixture of liquid and air to produce high quality foam.*

Contains Olive Oil

- *Well-known for its skin softening properties.*

Contains Allantoin

- *Protects and softens skin.*

Contains Lactic Acid

- *Supplies moisture to skin, eliminates smell, balances skin's pH.*

Contains Glycerin

- *Natural palm oil concentrate. Freshens and softens skin.*

Contains Floral fragrance (Lavender)

- *Soft floral fragrance retains freshness and cleanliness.*

Contains Phospholipids

- *Palm oil concentrate. An antibacterial agent and have other functions like cleansing, anti-inflammation and moisturizing properties.*

AVAILABLE PACK SIZE

50ml

STORAGE CONDITION

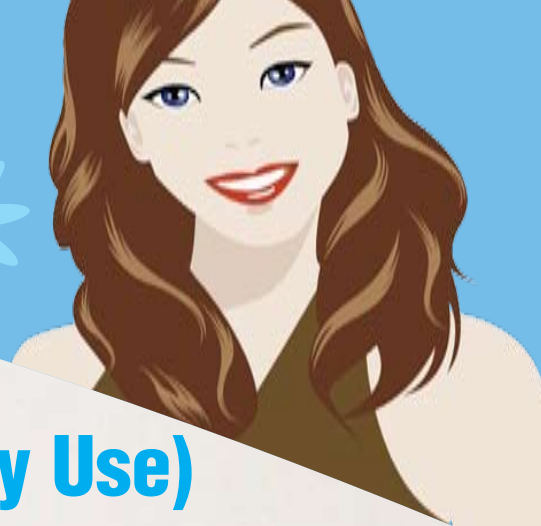
Store in a cool and dry place.

DIRECTIONS OF USE

Pump foam onto clean and wet palm. Clean your intimate parts, rinse with water. For external use.

*To be upgraded soon





Joshi Sanitary Pad (Day Use)

Protect, refresh and comfort with FIR and Nano Silver Technology

This new CNI Joshi Sanitary Pad (Day Use) is specially developed to retain the features of existing Joshi Sanitary Pad, as well as incorporated with new technology to ensure better quality product.

The new CNI Joshi Sanitary Pad is individually packed in soft cottony wrapper in a hygienic and resealable aluminum bag. Besides from the attractive packaging, CNI Joshi Sanitary Pad also comes with unique features to give you comfortable feeling and maximum protection all day long.

SPECIAL FEATURES

High quality absorption

- *Joshi Sanitary Pad is made from highly absorbent material, providing you maximum protection all day long. The Super Absorbent Polymer (SAP) is proven to effectively absorb at least 50ml fluid. Thus, you do not have to worry even during your heavy flow day.*

Ultra-thin

- *Joshi Sanitary Pad is ultra-thin, only 2mm! Its special design makes it suitable for anyone. It is so comfortable; you can hardly feel it is there.*

With adhesive wings

- *Joshi Sanitary Pad comes with adhesive wings to keep the pad in place for better protection. The adhesive material also keeps you protected even when doing active movements.*

Stereoscopic defend barrier

- *The stereoscopic defend barrier at both side of Joshi Sanitary Pad is excellent in preventing side leakage.*

Funnel designed top sheet

- *Joshi Sanitary Pad's top sheet is specially designed with funnel shape to prevent flowing back to keep you fresh and comfortable all day long.*

AVAILABLE PACK SIZE

20 pads/bag

STORAGE CONDITION

Store in a cool and dry place.

DIRECTION OF USE

During menstruation period, heavy to medium flow.

CAUTION

Stop using if irritation occurs. Do not flush.





Joshi Sanitary Pad (Night Use)

Protect, refresh and comfort with FIR and Nano Silver Technology

This new CNI Joshi Sanitary Pad (Night Use) is specially developed to provide overnight protection with its extra long length, which is up to 360mm! The longer and wider surface area at the back provides maximum protection during normal. Flow as well as heavy flow.

The new CNI Joshi Sanitary Pad is individually packed in soft cottony wrapper in a hygienic and resealable aluminium bag. Besides from the attractive packaging, it also comes with unique features to give you comfortable feeling and maximum protection all day long

SPECIAL FEATURES

High quality absorption

- *Joshi Sanitary Pad is made from highly absorbent material, providing you maximum protection all day long. The Super Absorbent Polymer (SAP) is proven to effectively absorb at least 50ml fluid. Thus, you do not have to worry even during your heavy flow day.*

Extra Long

- *The extra long length of up to 360mm provides maximum protection to you while you are sleeping or on the move.*

Ultra-thin

- *Joshi Sanitary Pad is ultra-thin, only 2.3 mm! Its special design makes it suitable for anyone.*

With adhesive wings

- *Joshi Sanitary Pad comes with adhesive wings to keep the pad in place for better protection. The adhesive material also keeps you protected even when doing active movements.*

Style 3-D leakage barrier

- *The style 3-D leakage barrier at both side of Joshi Sanitary Pad is excellent in preventing side leakage.*

Funnel designed top sheet

- *Joshi Sanitary Pad's top sheet is specially designed with funnel shape to prevent flowing back to keep you fresh and comfortable all day long.*

AVAILABLE PACK SIZE

10 pads/bag

STORAGE CONDITION

Store in a cool and dry place.

DIRECTION OF USE

During menstruation period, heavy flow during night time.

CAUTION

Stop using if irritation occurs. Do not flush.





Joshi Panty Liner

Protect, refresh and comfort with FIR and Nano Silver Technology

CNI Joshi Panty Liner is individually packed in soft cottony wrapper in a hygienic and resealable aluminium bag. Besides from the attractive packaging, it also have other unique features to give you comfortable feeling all day long.

SPECIAL FEATURES

Unique soft sheet and ultra-thin

- *The unique soft sheet surface of Joshi Panty liner provides you excellent freshness and comfort all day long. The panty liner is ultra-thin, only 0.7 mm! It is so comfortable; you can hardly feel its presence.*

Special somatological engineering design

- *Joshi Panty liner special somatological engineering design means that the design is based on the study on physiology and anatomy of human body. That is why it fits nicely and securely in place to give you the protection you needed.*

Unscented

- *According to the Canadian Health Network, yeast infections can be prevented by avoiding scented panty liner or sanitary pad. In line with this, CNI Joshi Panty liner does not incorporate with fragrance to avoid unnecessary irritation that may cause vaginitis or inflammation of the vagina.*

AVAILABLE PACK SIZE

20 pads

STORAGE CONDITION

Store in a cool and dry place.





Firesens Mentholated Rub

For symptomatic relieve of muscular aches and pains

Specially formulated to relieve pains, backache and minor sprain. Just apply a thin layer on the affected area and CNI Fire Sens will provide a long lasting soothing sensation to relieve pains without oily feeling.

SPECIAL FEATURES

Contains Tea Tree Oil

- *To help to relieve muscle pain and itchiness cause by mosquitoes bite.*

Contains Eucaplytus Oil

- *Traditionally used to relieve muscular aches due to excessive movement or exercise.*

Contains Nutmeg Oil

- *To help to relieve headache.*

Contains Methyl Salicylate

- *Traditionally used to relieve muscular aches due to excessive movement or exercise.*

Contains Menthol

- *Provide soothing and cooling sensation.*

AVAILABLE PACK SIZE

25g

STORAGE CONDITION

Store in a cool and dry place.

DIRECTIONS OF USE

Rub on affected area.



Nutrismoist

Multipurpose cream

CNI Nutrismoist is a multipurpose cream formulated from natural ingredients, traditionally used for symptomatic relief of joint and muscle pain, insect bites, minor burns and mild itcheness. This product is registered with the Malaysia Ministry of Health as traditional product.

SPECIAL FEATURES

Contains Ginseng, Rhizoma Polygoni Cuspidati, Radix Polygoni Multiflori, Radix Angelica Sinensis.

- *A potent herbs with various benefits and uses.*

AVAILABLE PACK SIZE

50g tube

120g jar

STORAGE CONDITION

Store in a cool and dry place.





Sandfi Body Shaping Lotion

A unique combination of fat burning actives for a topical treatment of thighs, buttocks, hips, waist and arms.

Encapsulated in this advanced liquid crystal network, CNI SandFI Body Shaping Lotion is a unique combination of fat burning actives for a topical treatment of thighs, buttocks, hips, waist and arms. The lipolytic substances work in a synergistic way to accelerate the breakdown of lipids in adipose tissue. Thus this innovative double targeted body shaping treatment forms and contours your body, while leaves your skin with a silky final touch and pleasant fragrance.

SPECIAL FEATURES

Contains Citrus Aurantium Amara Fruit extract

- *Plant extract that assists in fat burning.*

Contains Caffeine

- *increases fat burning.*

Easily absorb

- *Leave no greasy feeling.*

Moisturizing

- *Provide moisturizing effect to skin.*

AVAILABLE PACK SIZE

200ml

STORAGE CONDITION

Store in a cool and dry place.

SUITABLE FOR

Young adult 23 -49 years

DIRECTION OF USE

Apply evenly on targeted area, twice daily, in the morning and at night. Massage lightly in circular motion until lotion is absorbed completely. For best results, use after a warm shower.





CNI CORPORATION SDN BHD

Wisma CNI, 2 Jalan U1/17 Seksyen U1, Hicom-Glenmarie Industrial Park, 40000 Shah Alam, Selangor, Malaysia
•Tel: 603-5569 4456 •Website: www.cni-global.com / www.cnimall2u.com